

RE-IMAGINE WOOD

THE WORLD'S MOST BEAUTIFUL BUILDING MATERIAL



DOUGLAS FIR

Patch 22

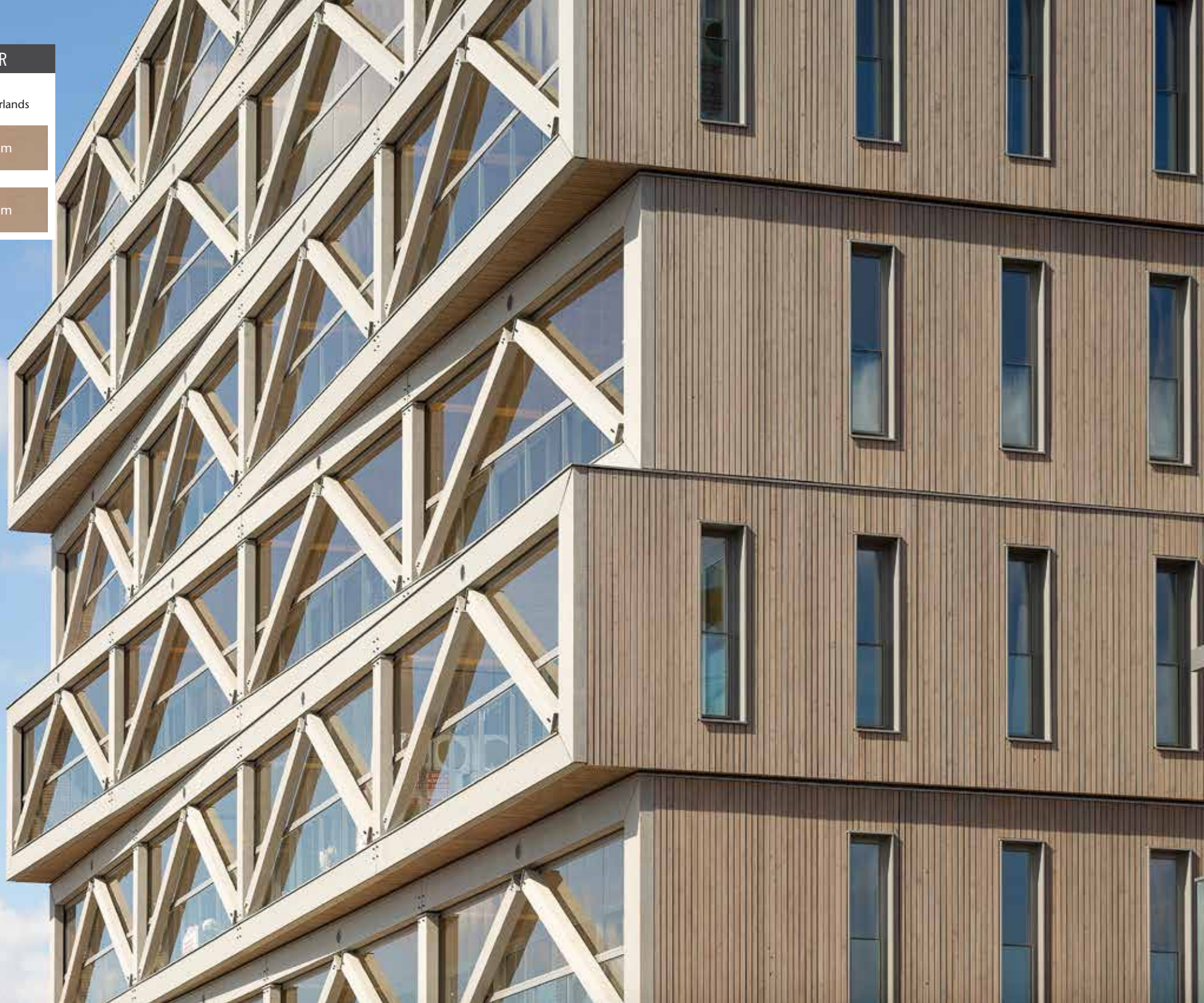
Amsterdam, Netherlands

COAT #1

WoodForce® Custom

COAT #2

WoodForce® Custom





THERMALLY MODIFIED WOOD

Tower Wood
Windermere, UK

COAT #1
Precision Coat™ SDF
Medallion

COAT #2
Precision Coat™ SDF
Medallion

BRINGING NEW IDEAS TO THE OLDEST BUILDING MATERIAL

Long before 'green' was mainstream, Sansin® pioneered high performance, water-borne formulas that penetrate better, last longer and look more beautiful than traditional wood coatings.

From penetrating undercoats that protect deep from within, finishes that highlight the natural beauty of wood, and top coats that add exceptional clarity and character, Sansin wood protection is designed to deliver eye-catching beauty in a durable and sustainable line of products.

**WE PROTECT WOOD TODAY,
SO YOU CAN LOVE IT FOREVER™**



IPE WOOD

Wood Deck
Victoria, BC

COAT #1

SDF Autumn Gold

COAT #2

SDF Top Coat

COAT #3

SDF Top Coat

NOTHING PROTECTS WOOD BETTER



WHY CHOOSE BETWEEN WATER-BASED AND OIL-BASED COATINGS?

Sansin provides the best of both worlds. Our innovative water-borne technology carries modified natural oils and resins deep into the wood using one of nature's commonplace miracles – water. As the water evaporates, Sansin bonds directly with wood substrates to form a tough, durable barrier that won't crack, peel or blister.



Every structure has its own unique coating requirements based on factors like climate, substrate, exposure and desired finish, to name a few. Sansin products are designed to offer the perfect combination of performance, color, finish and maintainability. By working in conjunction with our clients, we create beautiful wood care solutions, crafted according to the demands of each project.

THE PERFECT FINISH AND PROTECTION, EVERY TIME

SINCE 1986

ENGINEERED WOOD

University of
British Columbia
Vancouver, BC

COAT #1

KP™-12

COAT #2

Purity® Floor Gloss

COAT #3

Purity® Floor Satin



CLIMATE



SUBSTRATE

WHAT TO CONSIDER WHEN

CLIMATE FACTORS



- 4-Seasons with heavy freeze/thaw cycles
- Desert conditions and high UV
- Tropical, high humidity and high UV
- Coastal, highly variable, salt, wind, rain and sun

SUBSTRATE FACTORS



- Type: hardwood, softwood, pressure-treated, specialty, engineered wood, exotic hardwoods and more
- Format: logs, dimensional timbers, panels, siding, shingles
- Size: thickness to width ratio impacts stability
- Texture: rough, smooth, wire-brushed
- Moisture equilibrium: high, low or variable



FINISH



MAINTENANCE

CHOOSING A FORMULA

FINISH FACTORS



- Color: let your imagination explore
- Clarity & Depth: the richness and intensity of the finish
- Transparency: clear natural wood tones, semi transparent and solid colors
- Finish & Lustre: range of lustre from high gloss to extra low lustre

MAINTENANCE FACTORS



- Implementing proactive wood care programs
- Planning maintenance cycles to support desired aesthetic
- Sustainable maintenance to ensure long term clarity and depth of finish



EXTERIOR



INTERIOR

Exterior protection for cladding, decks, timber, millwork and marine.

Interior finishes for cabinetry, shelves, floors, ceilings and walls.





Protecting wood during manufacturing and construction.

Wood treatments for specialty needs.



Visit sansin.com or sansinactoryfinish.com today.

EXTERIORS



Oostvaarders Nature Reserve | Precision Coat™ SDF

Sansin formulates its Exterior Enviro Stains® to adapt to many varying factors. Collaborating closely with project architects, designers and engineers, our coating systems deliver the long term performance and exceptional beauty your project demands.

The stunning custom black finish above was factory finished using a Precision Coat™ system providing long lasting durability and easy maintenance – perfectly adapted to the rugged local climate and northern exposure.

Private Residence | Sansin Dec, Sansin SDF



Private Residence | Sansin Dec



Private Residence | Sansin SDF | Photo © Linwood Custom Homes



Killarney Mountain Lodge | Sansin Classic



Private Residence | Sansin Classic



Private Residence | Sansin Classic, Timber-Tec® Chinking

LOG AND TIMBER



Killarney Mountain Lodge | Sansin Purity® Interior

Not only does a log home require protection from sun and rain, but the sheer size of the wood demands a coating that “breathes” freely to prevent moisture from getting trapped and rotting the log from within.

Sansin log and timber products are designed to enhance and protect the natural beauty of your log home. Because Sansin finishes use water to carry modified natural oils deep into the logs, it can even be applied to wood with a higher moisture content.

WESTERN RED CEDAR

COAT #1

Precision Coat™ SDF

COAT #2

Precision Coat™ SDF

COAT #3

Precision Coat™ SDF

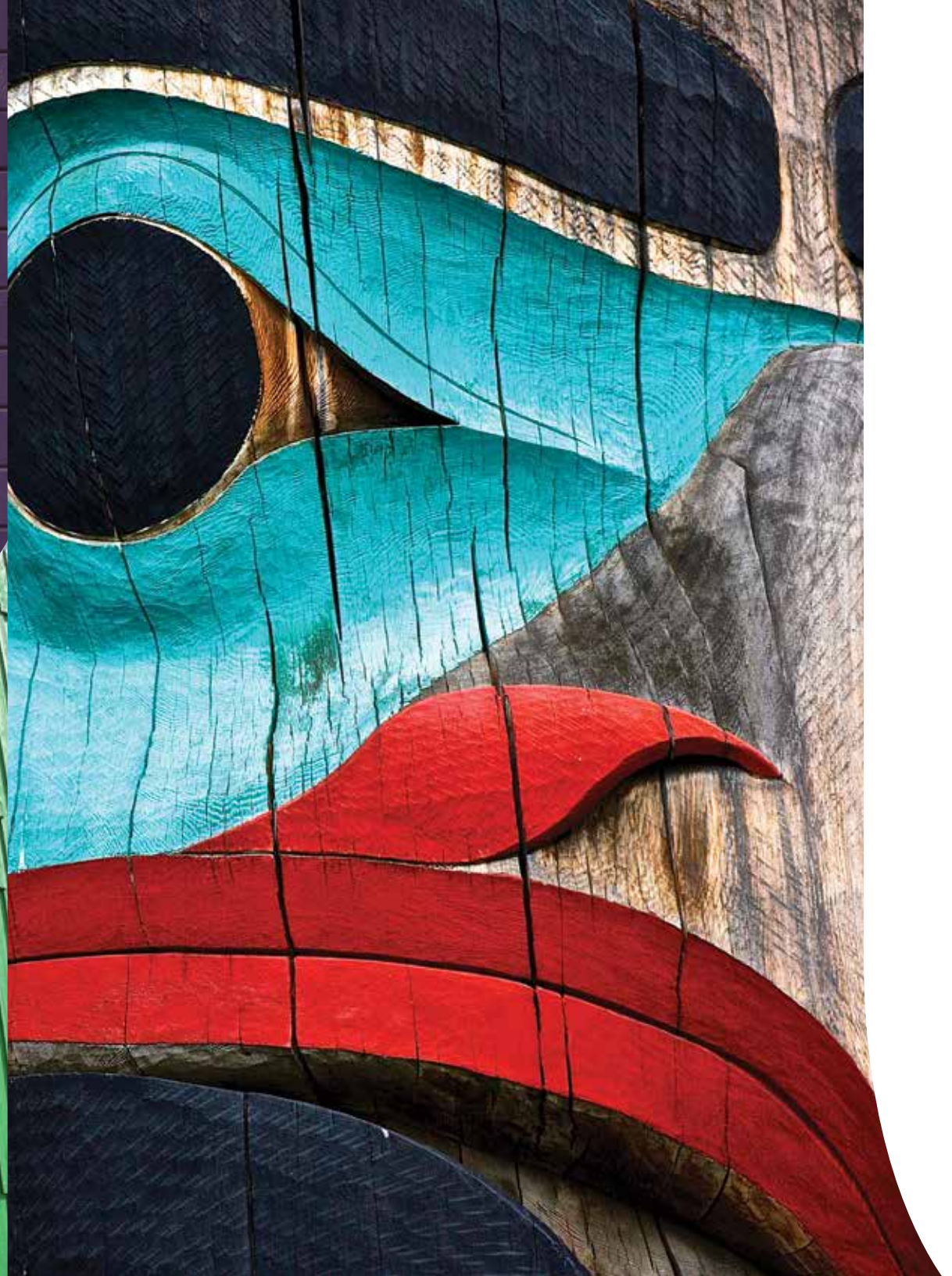
LARCH

COAT #1

Precision Coat™ SDF

COAT #2

Precision Coat™ SDF



IF YOU CAN IMAGINE IT WE CAN CREATE IT

Why build with wood in the first place? The answer is simple: beauty and durability. At Sansin we feel no other building material even comes close to the natural warmth, character and versatility of wood. Wood is our only natural renewable resource and every piece is unique. With over a hundred colors to choose from, plus a range of transparency, lustre and finish options, the color possibilities of Sansin Enviro Stains® are literally unlimited. From low-lustre natural to solid-hide gloss, our wood coatings are renowned for their purity of color and their exceptional UV

and fade-resistant qualities. To achieve this, we've harnessed the power of nano technology to create color like you've never seen before. An innovative process micronizes the highest quality pigments into tiny particles so incredibly fine – measured in a billionth of a meter – that they combine with the protective oils and resins in Sansin Enviro Stains® on a molecular level. Once applied to your home or deck, Sansin's penetrating stains carry the pigmentation into the wood for uniform color that is so vibrant and long-lasting it has to be seen to be truly appreciated.



CELEBRATE

THE INCREDIBLE NATURAL COLORS OF WOOD

ENGINEERED WOOD

**Tsleil-Waututh
Administration &
Health Centre**
Vancouver, BC

COAT #1

Precision Coat™ SDF
Custom

COAT #2

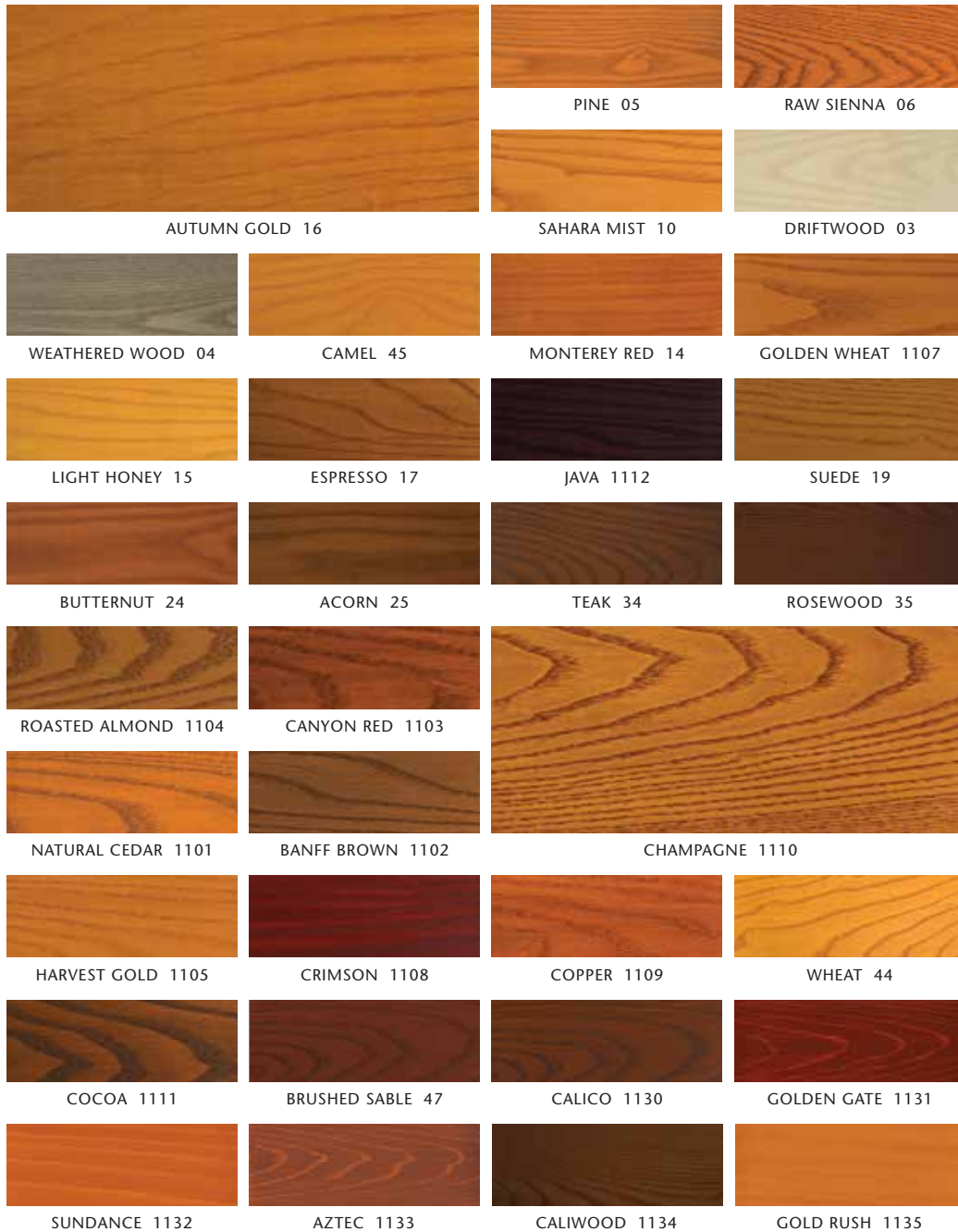
Precision Coat™ ENS
Custom

COAT #3

Precision Coat™ ENS
Custom

Photo © Ema Peter

NATURALS



TRANSLUCENTS



IMPORTANT: Visit sansin.com to see our full line of available retail colors. View Architectural (Precision Coat™) colors at sansinactoryfinish.com. Custom colors available by request. Color may vary depending on texture, grain, color, porosity and type of wood may not be exactly as illustrated. Always test the purchased product on an inconspicuous part of the project to ensure the color and transparency meet expectations of your control sample. Custom colors and color matching available upon request.



SATURATED



CAPE COD GRAY 50



BARN BOARD 54



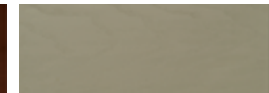
OPAQUE WHITE 52



SILVER BIRCH 53



MAHOGANY 57



TAN OPAQUE 55



CUSTOM



MOCHA 58



MOSS GREEN 66



WALNUT 70



MUSHROOM OPAQUE 65



HERITAGE BLUE 61



BALTIC BLUE 62



OCEAN BAY BLUE 74



SAGE GREEN 64



SILVER GRAY 51



OXFORD OPAQUE 56



HUNTER GREEN 68



KELP 63



SLATE BLUE 71



RED OAK 73



CHESAPEAKE 67



ATLANTIC BLUE 75



HARBOR FOG 95



STARRY NIGHT 99



GALAXY BLUE 101



LITTLE BOY BLUE 103



BURNT OCHRE 105

ULTRA-SATURATED



IMPORTANT: Color may vary depending on texture, grain, color, porosity and type of wood and may not be exactly as illustrated. Always test the purchased product on an inconspicuous part of the project to ensure the color and transparency meet expectations of your control sample. Custom colors and color matching available upon request.



SOLID-HIDE

SOLID HIDE	SATURATED COLOR	SOLID HIDE	SATURATED COLOR	SOLID HIDE	SATURATED COLOR
SNOW WHITE 1126		PEACHES & CREAM 1150		LEMON WHIP 1151	
MARRAM WHITE 1152		SANDSTONE 1125		TOASTED COCONUT 1153	
CREEKSIDE GREEN 1122			CANYON CLAY 1124		
CASHMERE 1123		PEBBLE 1119		FOXGLOVE 1157	
DESERT SAND 1154		FAIRVIEW TAUPE 1113		DENIM 1159	
CELTIC BLUE 1128		CUSTOM			
BLUE BAYOU 1156		HONEY POT 1164		BLUE BATH 1155	
BLACK 1117					

SOLID-HIDE

SOLID HIDE	SATURATED COLOR	SOLID HIDE	SATURATED COLOR	SOLID HIDE	SATURATED COLOR
					
FERNDALE GREEN 1129	HARVEST WHEAT 1162	MADISON AVENUE 1163			
					
STORM 1121	FERN GREEN 1118	NUTMEG 1165			
					
ALEXANDRIA BEIGE 1120	GRENADA BROWN 1166	KHAKI 1167			
					
CAPPUCCINO 1168	BEECH 1169	HEMLOCK 1170			
					
RED WAGON 1171	CRANBERRY FIELDS 1173				
					
CHESTNUT BROWN 1116	BURNT TOFFEE 1172	COMMERCIAL BROWN 1115			
					
SABLE 1114	CARBON GREY 1158	SANDBLAST 1161			
					
KENYA 104	WINTER WHEAT 106				



High-lustre, low-lustre, enhanced texture and grain – Sansin solid colors allow you to express your vision however you want. Beautiful color and texture, paired with exceptional performance, color retention, adhesion and scuff resistance.

IMPORTANT: Color may vary depending on texture, grain, color, porosity and type of wood and may not be exactly as illustrated. Always test the purchased product on an inconspicuous part of the project to ensure the color and transparency meet expectations of your control sample. Custom colors and color matching available upon request.



INTERIORS

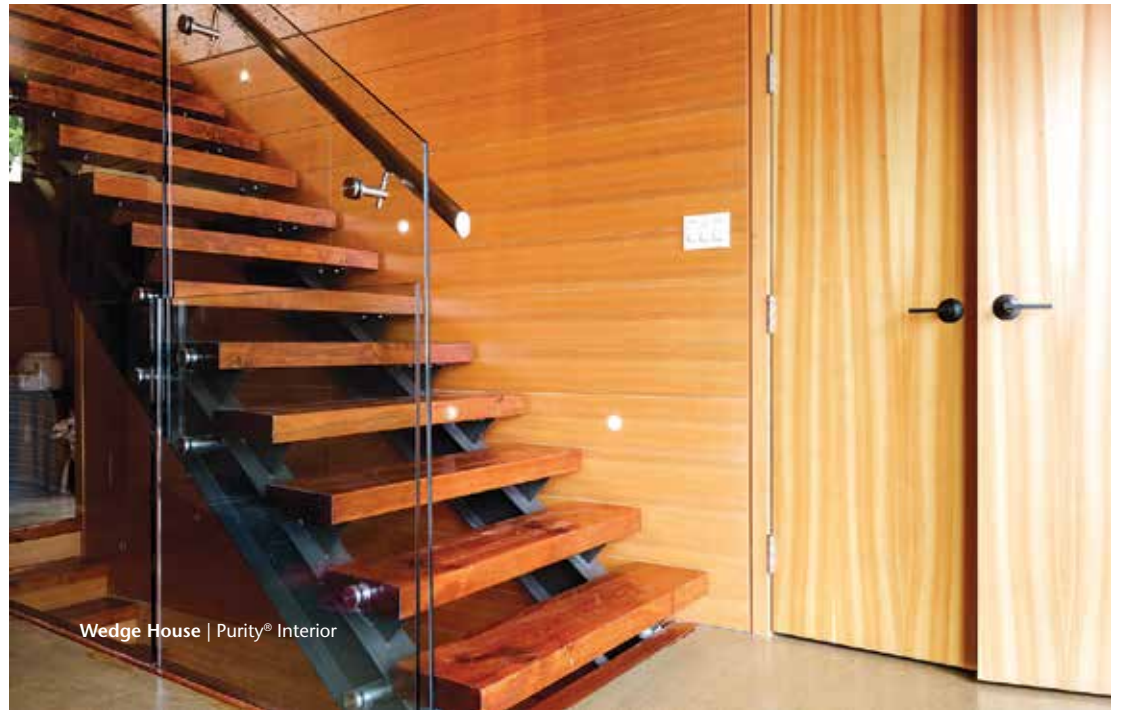
Wedge House | Purity® Interior | Photo © Finline Perspectives

Sansin Purity® delivers extraordinary beauty and clarity of color – while providing durable protection for high-wear interior surfaces. Whether you want to enhance the natural warmth of wood or a crystal-clear finish for light, white and gray tones, we have the penetrating stain, gel, lustrous oil or clear topcoat

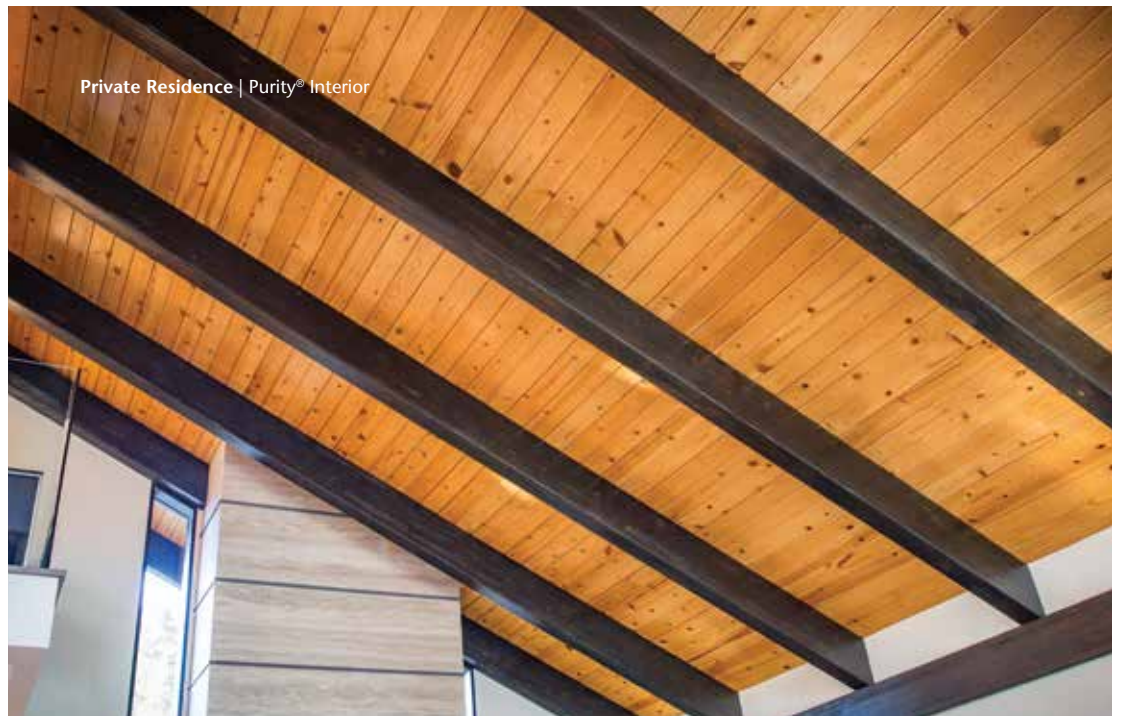
that's perfect for your project. The entire family of Sansin Purity® Interior products is low odor, environmentally-friendly, low or zero-VOC, non flammable and easy to apply both on-site and in factory applications.



Wedge House | Purity® Interior



Wedge House | Purity® Interior



Private Residence | Purity® Interior

INTERIOR COLORS



Enhance and protect the natural warmth of your home with Sansin Purity® Interiors. Designed to the exacting standards of master joiners and architects, Sansin Purity is known for extraordinary beauty and clarity of color. A wide range of stains, finishes and oils offer durable protection

for high-wear interior surfaces. Best of all, Sansin Purity offers the performance your home deserves – without the use of dangerous solvents or dyes. Sansin Purity is perfect for cabinetry, shelves, floors, ceilings and walls.

IMPORTANT: Color may vary depending on texture, grain, color, porosity and type of wood and may not be exactly as illustrated. Always test the purchased product on an inconspicuous part of the project to ensure the color and transparency meet expectations of your control sample. Ambering (darkening) can occur in the absence of light but is reversed when subjected to light energy. Minimize or eliminate discoloration with Purity® Interior Stains and Purity® Interior finishes.

BREATHE EASIER

WITH SANSIN INTERIOR WOOD FINISHES

ENGINEERED WOOD

DPR Construction Headquarters

Western US

COAT #1

Precision Coat™ Purity®
Clear Gloss

COAT #2

Precision Coat™ Purity®
Clear Gloss

COAT #3

Precision Coat™ Purity®
Clear Gloss



MARINE



Teak Life® products are designed to provide long term protection for your teak decks, enhancing their beauty and performance through sun, storms, salt and spray.

Teak Life® UV extends the life of teak decks by protecting against UV damage and discoloration. Teak Life® UV reduces moisture absorption, dramatically improving the dimensional stability of teak while enhancing and maintaining its natural beauty.



Resolution® is a two-part, environmentally-friendly NGR (Non-Grain Raising) high performance wood finish system. Resolution® is tougher, more beautiful and longer-lasting than varnish, delivering brilliant clarity and low-maintenance performance for marine and land-based applications.

Resolution® has exceptional UV resistance, is environmentally friendly, and is available in several beautiful warm clear tones.



COMMERCIAL PROJECTS



Rocky Pines Community Centre | KP™-12, SDF

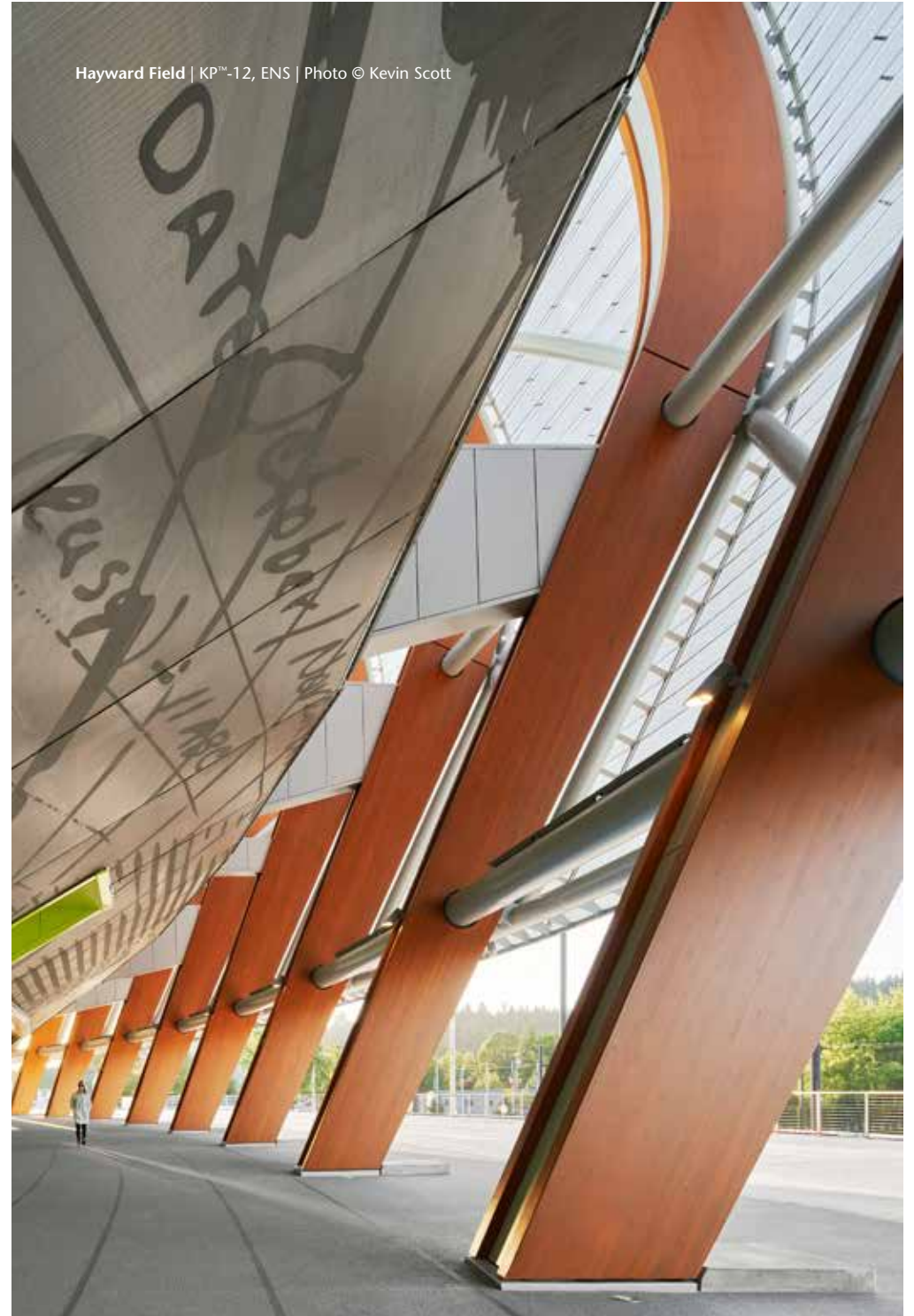
Sansin offers a multitude of specialty wood finishes, including undercoats, base coats, flame spread protection, and decay, insect and mold protection products. Our formulas are feature rich and tailored to protect and beautify wood in a range of climates and exposures, for both interior and exterior

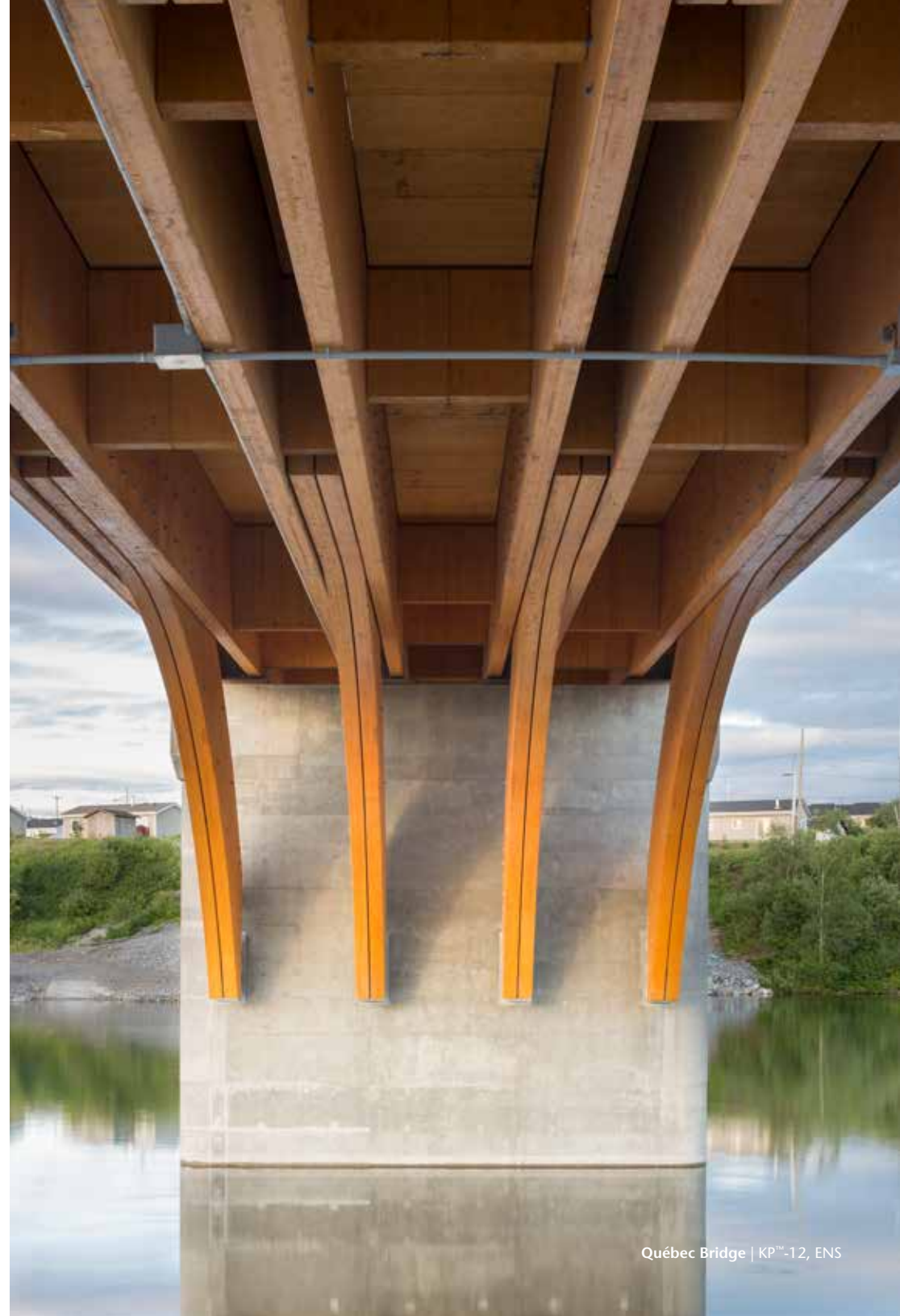
applications. Sansin consistently delivers environmentally-friendly, long lasting, and sustainable protection for every type of project. To view our wide range of specialty wood products, go to [sansin.com](https://www.sansin.com).

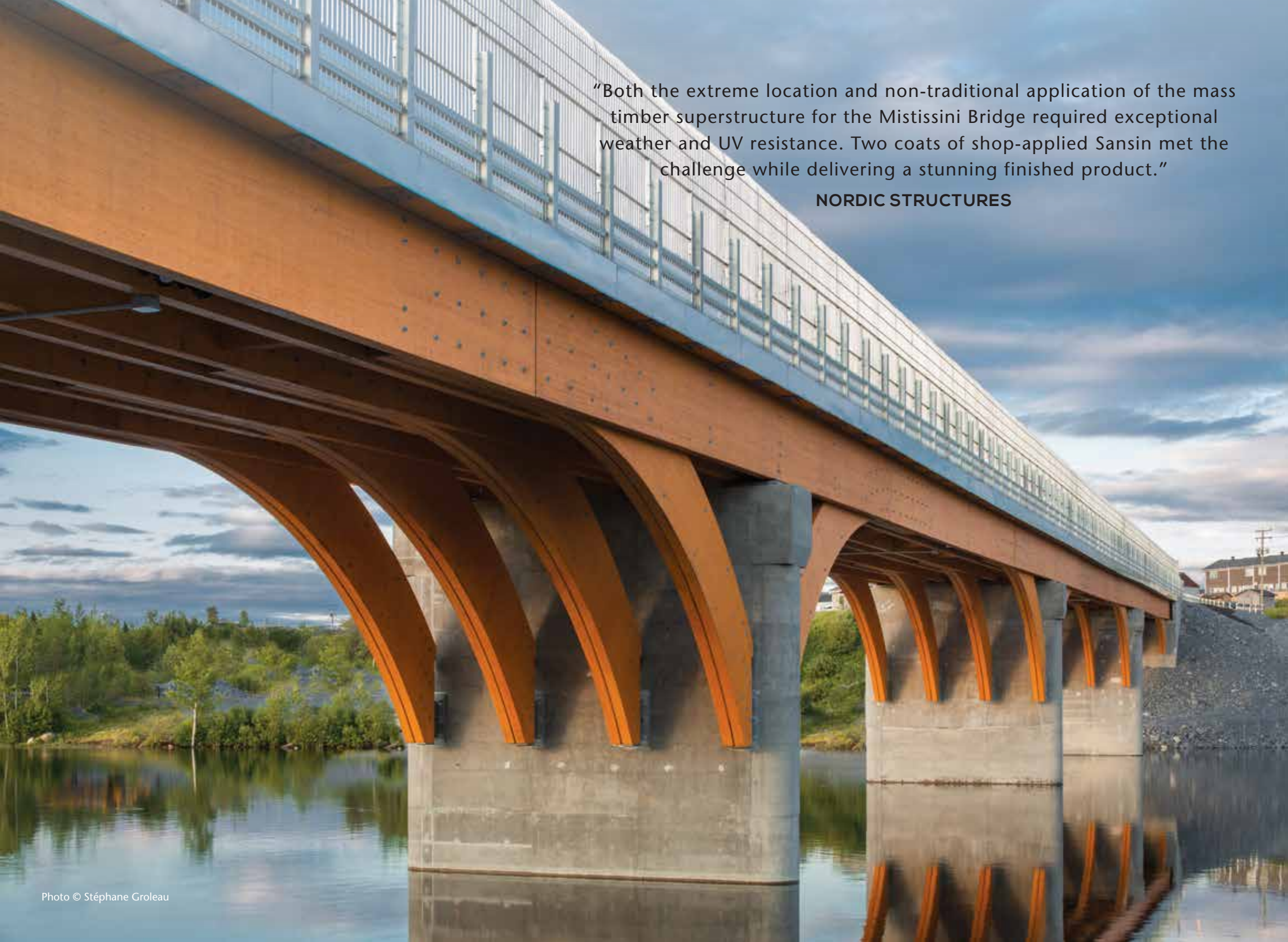
Fort McMurray Airport | KP™-12, ENS



Hayward Field | KP™-12, ENS | Photo © Kevin Scott







“Both the extreme location and non-traditional application of the mass timber superstructure for the Mistissini Bridge required exceptional weather and UV resistance. Two coats of shop-applied Sansin met the challenge while delivering a stunning finished product.”

NORDIC STRUCTURES

“The elegant glulam roof structure and window wall grillages bring warmth and light to the entry atrium. Custom-tinted Sansin finishes were used on both the interior and exterior work.”

GARY WILLIAMS, TIMBER SYSTEMS LIMITED

DOUGLAS FIR

Montessori School
Toronto, ON

COAT #1

KP™-12 UWW

COAT #2

Precision Coat™ SDF

COAT #3

Precision Coat™ SDF



“Sansin’s signature Precision Coat™ wood protection system delivered the beauty, flexibility and performance needed for an award-winning landmark.”

DENNIS LEEGWATER, LEEGWATER HOUTBEREIDING

Fenix I | Precision Coat™ SDF, Custom | Photo © Nadine Korringa



Fenix I | Precision Coat™ SDF, Custom



Catalyst Building, WA | Purity® Stain & Purity® Glacier | Photo © Ben benschneider

PRECISION COAT™ FACTORY FINISHES

KEEP WOOD BEAUTIFUL

WESTERN RED CEDAR

Place des Canotiers
Québec City, QC

COAT #1

Precision Coat™ SDF

COAT #2

Precision Coat™ SDF

BEAUTIFUL, DURABLE AND MACHINE APPLIED

NATURALLY PERFECT® SANSIN FACTORY FINISH

Backed by over thirty years of performance with large commercial, residential and mass timber wood buildings and structures, Sansin is the global leader in developing high-performance industrial and factory finishes that set the benchmark for beauty, durability, and environmentally friendly formulas.

Sansin's Precision Coat™ Factory Finishes are available in specialized formulas for single or multi-step protection for all wood surfaces. Sansin's Factory Finishes are engineered to meet exceptional performance and beauty characteristics while achieving standardized production quality and cost efficiencies.



View Architectural (Precision Coat™) colors at [sansinfactoryfinish.com](https://www.sansinfactoryfinish.com). Custom colors available by request.





ENGINEERED WOOD

Videotron Centre
Québec, CA

COAT #1

KP™-12 UWW

COAT #2

Purity® Interior
Clear Gloss

COAT #3

Purity® Interior
Clear Low Lustre

GLUE LAMINATED
DOUGLAS FIR TIMBER

National Arts Centre
Ottawa, ON

COAT #1

KP™-12 UWW

COAT #2

Precision Coat™ Purity®
Glacier Gloss

COAT #3

Precision Coat™ Purity®
Glacier Low Lustre

COMMERCIAL CLIENT SERVICES



Sansin Iris® helps architects and other design and engineering professionals achieve wood coating quality and maintenance objectives. Sansin Iris® asks the right questions to help our customers define the coating system most suited to specific project requirements.

Visit sansinactoryfinish.com/markets/architects/

SANSINCARE 

Sansin Care® provides personalized service that optimizes maintenance scheduling to keep your wood protection looking and performing well for years to come. Proactive maintenance reduces costs and improves coating performance.

Sansin is proud to support our clients in partnership with our qualified dealers, delivering local service through a network of trained staff and industry professionals.

QUALITY CONTROL FROM PREPARATION
THROUGH TO APPLICATION AND MAINTENANCE



ACCOYA

Heartfelt Guesthouse
Sacramento, CA

COAT #1

KP™-12

COAT #2

Precision Coat™ SDF

COAT #3

Precision Coat™ SDF

SETTING THE BAR FOR EXCELLENCE IN WOOD FINISHING

- **Canada House Convention Centre**, Architect: Tillman Ruth Robinson, General Contractor: Pitfield Construction
- **DPR Construction Headquarters**, Architect: SmithGroup, Structural Engineer: Buehler Engineering, General Contractor: DPR Construction
- **Fenix I**, Architect: Mei Architects, General Contractor: Heijmans Woningbouw
- **Fort McMurray International Airport**, Architect: Mcfarlane Biggar Architects + Designers Inc., General Contractor: Ledcor Construction Ltd.
- **Hayward Field**, Architect: SRG Partnership, General Contractor: Hoffman Construction Company
- **Heartfelt Guesthouse**, Architect: 2fORM Architecture, General Contractor: Chambers Construction
- **Mistissini Bridge**, Architect: Stantec, General Contractor: Nordic Structures
- **National Arts Centre**, Production Renewal Project Architect: Diamond Schmitt Architects, General Contractor: PCL Constructors Canada Inc.
- **Patch 22**, Architect: Frantzen et al Architekten, General Contractor: Lemniskade Projects
- **Place des Canotiers**, Architect: ABCP Architecture, General Contractor: Pomerleau, Inc.
- **Rocky Pines Community Centre**, Architect: Lubor Trubka Associates Architects, General Contractor: Unitech Construction Management
- **Toronto Montessori School, Bayview**, Architect: Farrow Partners
- **Tower Wood Outdoor Education Centre**, Architect: Lancashire County Council, General Contractor: Seddon Construction
- **Tsleil-Waututh Administration & Health Centre**, Architect: Lubor Trubka Associates Architects, General Contractor: Syncra Construction, Wood: BC Passive House
- **University of British Columbia, Centre for Interactive Research on Sustainability (CIRS)**, Architect: Perkins+Will, Engineered Wood Manufacturer: Structurlam
- **Videotron Centre**, Architect: Populous, General Contractor: Pomerleau, Inc.

NOTES





Naturally Perfect®



Cover Photo © Kevin Scott