

Nature's Oil: A concentrated low VOC traditional oil finish that protects and defines wood color and character. Nature's Oil provides a full rich penetrating finish in just one coat. Use on timbers, furniture, floors and any interior wood surface where a natural oil look is desired.

FEATURES

- Augments wood tone, defines character
- Low VOC's in concentrated form
- Provides a silky smooth finish
- Non Grain Raising (NGR) treatment
- 1-coat application
- Contains no harsh solvents
- Contains the finest natural oils
- Apply by brush, pad or wiping
- Excellent workability & flow properties
- Concentrated, dilute as needed

IMPORTANT

Product Data Sheets are based on "ideal" work conditions. Due to wood variability and varying environmental conditions, it is strongly recommended that the end-user needs to determine that the application conditions, coating product system, and techniques are suitable to reach the desired results. Please see Conditions of Sale.

FORMULAS

DANGER! Nature's Oil is combustible. Rags, steel wool or waste soaked with this product may spontaneously catch fire if improperly discarded. Immediately after use, place waste in a sealed, water-filled metal container to avoid spontaneous combustion.

COLORS

Available in Clear to augment the natural tone of a wood species as well as specified architectural custom colors.

CHARACTERISTICS

- Appearance.....Translucent Amber Liquid
- Odor.....Mild Plant Oil
- Form.....Liquid
- Specific Gravity.....0.92
- Density.....7.44
- Viscosity.....20-25 sec, Zahn #3
- Freezing Point.....N/A
- Flash Point.....129°C (265°F)
- Dilutents.....Mineral Spirits
- Clean Up.....Mineral Spirits
- Coverage (reduced up to 4:1).....2,000 sq.ft./US gal
- Longer drying time needed in high humidity or low temperature
- VOC (g/L).....Actual 57.0/Regulatory 57.0
- Drying Time (to touch) at 20°C (68°F).....4 hours
- Thorough Dry.....24-48 hours

PACKAGING

Available in quarts, 2.5 L and 5 US gallon containers, and 50 US gallon drums.

PREPARATION

IMPORTANT: THE KEY TO A SUCCESSFUL PROJECT IS PREPARATION

- Proper preparation is critical for a beautiful finish and successful project.
- Defects can add to the character of wood. Sansin Purity Nature's Oil enhances that character. For defects that require repair, use only quality, solvent or oil based, tinted wood fillers to match the color of the project. Wood filler must be allowed to dry completely prior to sanding.
- Extra effort in sanding will pay off in aesthetics. Use 100-150 grit sandpaper and always sand with the grain for best results.
- Remove dust particles by vacuuming and wipe with a damp cloth.



SANDING #100-#150 GRIT



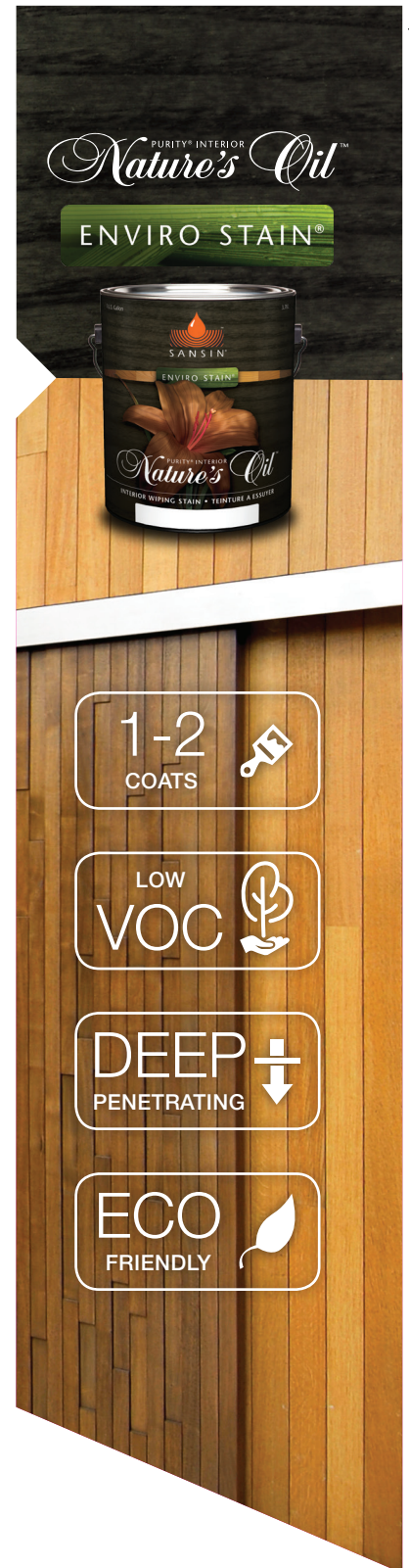
APPLY WITH A GOOD QUALITY BRUSH, A PAD APPLICATOR OR BY WIPING

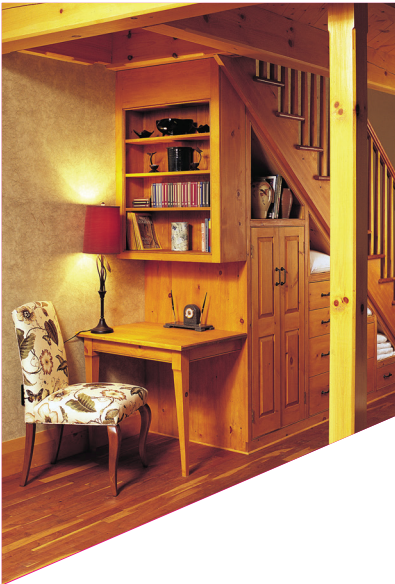
APPLICATION

- Apply Sansin Purity Nature's Oil with a good quality brush, a pad applicator or by wiping.
- Spread consistently and liberally then remove excess using clean lint free rags, wipe or polish gently to spread product evenly and remove excess material leaving a low lustre finish.

WORKING PROCEDURE

- **Test** formula on an inconspicuous wood surface to ensure proper color, penetration and technique.
- Allow 4-48 hours for drying in proper conditions when the temperature is 70°F (21°C) and the relative humidity is no higher than 50%.
- When using a tinted product be sure to stir well before and during application.
- For added finish or protection apply another coat of Nature's Oil allowing up to 4 hours of drying time between coats.
- Test apply formula on an inconspicuous area to ensure desired results.
- Be sure to remove excess to avoid uneven reflection.





CLEAN UP

- Clean equipment with D-Limonene or Mineral Spirits.
- Ensure brushes and rags are soaked with water after use to avoid potential combustion. Spread them out and allow to thoroughly dry before disposal.

SAFETY

See Safety Data Sheet.

STORAGE

Shelf life when stored in ideal conditions is 18 months. Store at a temperature of between +10°C and 30°C (50°F and 86°F). Keep containers tightly closed.

CONDITIONS OF SALE

The only obligation of the manufacturer and seller shall be to replace such quantity of Sansin product that is proven to be defective. Proof of purchase is required. Seller or manufacturer shall not be liable for any loss or damage connected with the use and/or handling of this product. All labor costs are specifically excluded. User should determine suitability of product for the intended use before application. User assumes all risk and liability in connection therewith. This warranty is expressly made in lieu of any and all other rights, warranties, conditions and remedies, express or implied, including but not limited to any implied warranty or condition of merchantability, fitness for a particular purpose, and any warranty or condition

arising out of a course of dealing, a custom or usage of trade. If any distributor or seller of product offers warranties or remedies which differ from those offered by Sansin, Sansin accepts no responsibilities for such warranties or remedies.

WARNING TO USERS

Keep out of reach of children. If swallowed immediately drink two glasses of milk or warm water. Do not induce vomiting. Call physician immediately. Avoid contact with skin or eyes; flush with soap and water. Avoid breathing of vapor or mist. The information contained in this document is given in good faith based on our current knowledge. The use of this product is beyond the control of The Sansin Corporation, and no guarantees, expressed or implied, are made as to the result to be obtained if not used in accordance with the published Directions for Use. The Sansin Corporation does not assume any legal responsibility for use or reliance on same. This information must on no account be used as a substitute for necessary field tests, which alone can ensure that the product is suitable for the expected use. Before using any product, read its label.

© ALL RIGHTS RESERVED
AUGUST 2022

