

**WoodForce:** A durable wood treatment that allows exterior wood to weather naturally while offering exceptional water repellency and protection from darkening and wood rot. Easily tinted to create standard and custom colors or vintage effects, allowing the exposed surface to weather more evenly.

**FEATURES**

- Protects wood and allows natural weathering
- Weathered tones or vintage effects
- Low toxicity, 0-VOC
- VOC-SCAQMD Compliant
- Red List/CARB Compliant
- Penetrating
- Water repellent
- Breathable
- Clean up with soap and water
- Maintains & repairs easily
- Weathering is subject to factors such as location, climate, exposure, wood species and building design

**WOODFORCE COMBINATIONS**

EFFECT	Clear	Accelerated	Vintage Color System
<b>OVERVIEW</b>	Develops natural weathered wood tone†	Speeds up natural weathering	Create a vintage weathered wood effect with your choice of color and technique
<b>COAT #1</b>	WoodForce Clear	WoodForce Accel	WoodForce Clear tinted to color of choice
<b>COAT #2</b>	WoodForce Clear	WoodForce Clear	WoodForce Clear, technique as desired
<b>COAT #3</b>	--	WoodForce Clear (Optional)	WoodForce Clear

**IMPORTANT**

Product Data Sheets are based on "ideal" work conditions. Due to wood variability and varying environmental conditions, it is strongly recommended that the end-user needs to determine that the application conditions, coating product system, and techniques are suitable to reach the desired results. Please see Conditions of Sale.

**APPLICATIONS**

Recommended for use on new, weathered or restored vertical wood surfaces such as wood cladding, solid timbers, Accoya wood, thermally modified wood and wood roofing where high performance wood protection is desired.

**FORMULAS**

The Sansin WoodForce system is made up of two base formulas that can be combined to create a variety of colors, distressed looks and natural weathering effects enabling you to build in protection against UV, moisture and blackening. The WoodForce system makes it easy to create our Standard colors or any custom color you desire.

- **WoodForce Clear** protects wood aggressively, tintable
- **WoodForce Accel** speeds up weathering effects, not tintable

**COATING SYSTEMS**

Formulate the WoodForce mixtures to any desired tone and transparency. Contact Sansin Care for specified architectural custom colors.

WoodForce is a protective weathering system.

**WoodForce Clear System:** Allows equal weathering, helps protect from moisture, darkening and wood rot.

**WoodForce Colors:** Decorative vintage colors protect from moisture, UV darkening & wood rot. Rich colors will tend to be more sustainable and weather less than weaker colors. Consider conditions of sale prior to selecting a formula.

**PACKAGING**

WoodForce is available in 3.78 Litres (1 Gallon), 18.92 (5 Gallon) Litres and 1000 Litres (264 Gallon) tote sizes.

**WOODFORCE CLEAR - CHARACTERISTICS**

- Appearance.....Milky
- Coloring.....Standard and Custom
- Odor.....Amine
- Form.....Liquid
- Specific Gravity.....1.01
- Density.....8.4
- pH, (approx.).....8.0-10
- Viscosity, Brookfield #1, 60RPM, 20° C (68°F).....80-100cPs
- Solvents.....Trace
- Freezing Point.....-1°C (31°F)
- Diluent.....Water
- Cleanup.....Water
- Drying Time (to touch) @ 20°C (68°F).....~2 hours
- Drying Time before Packaging.....Up to 24 Hours, Test accordingly
- Coverage.....4.90-8.58sq.m/L (200-350 sq.ft/US Gallon)
- VOC (g/L).....<5 g/L

**WOODFORCE ACCEL - CHARACTERISTICS**

- Appearance.....Off White
- Odor.....Amine
- Form.....Liquid
- Specific Gravity.....1.03-1.05
- Density.....8.5-8.8
- pH, (approx.).....8.0-10
- Viscosity, Brookfield #1, 60RPM, 20° C (68°F).....60-100cPs
- Solvents.....Trace
- Freezing Point.....-1°C (31°F)
- Diluent.....Water
- Cleanup.....Water
- Drying Time (to touch) @ 20°C (68°F).....~2 hours
- Drying Time before Packaging.....Up to 24 Hours, Test accordingly
- Coverage.....4.90-8.58sq.m/L (200-350 sq.ft/US Gallon)
- VOC (g/L).....<5 g/L

**APPLICATION METHODS**

- Always flood surface to the point of saturation
- Apply product by brush or flood coat – hand or automated spraying (low pressure or airless)
- Use a Corona-type china bristle 6" brush to brush out puddles and spread evenly.

**WoodForce™**

**ENVIRO STAIN®**



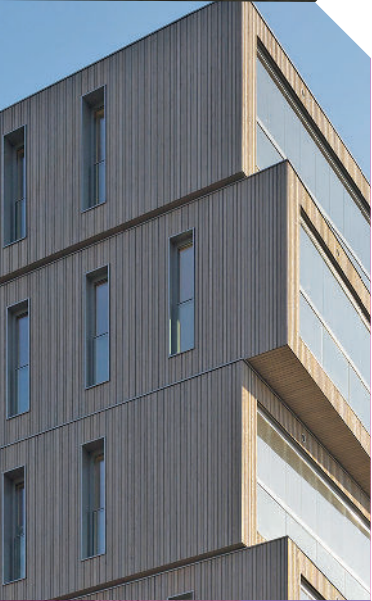
**2-3 COATS**

**NATURAL WEATHERING**

**CUSTOM COLOR & EFFECTS**



# WoodForce™



## PREPARATION

- Inspect the wood surface for defects and make any necessary repairs
- Use Sansin cleaners and/or wash the entire surface using clean water with appropriate pressure.
- Sand milled or smooth wood well using a 80-100 grit paper and a variable speed standard vibrating sander.
- Follow by washing with a nylon brush, vacuuming or using compressed air. Surface must be clean, free from dust, dirt, grease, wax or other contamination such as a pre-existing coating
- Time the sanding step just ahead of application - ideally within 24 hours.

## GENERAL WORKING PROCEDURE

- Use only WoodForce formulas provided by Sansin Color Guide. Do not use any other colorant as this will impact product performance
- Stir product well before and during the application process
- Test formula and coating system on an inconspicuous wood surface to ensure proper color and results according to specification and control sample
- Apply in proper conditions with an ideal temperature of 21°C (70°F) and relative humidity of approximately 50%
- Do not apply if rain or near freezing temperatures are less than 5° C. Do not apply in direct sunlight
- Saturate the surface to the point of refusal. Spray apply using an HVLP or Juicebox to spread evenly. Brush out runs and puddles using a large China Bristle brush (Corona Type 5" or 6")
- Apply to dry wood only. Do not apply to wood that is warm to the touch or in direct sunlight
- Always read published directions for use prior to beginning any project

## CLEAR & ACCELERATED WORKING PROCEDURE

### Clear Natural Weathering:

- Apply the first coat of WoodForce Clear at 6-8 mil
- Allow to dry, generally 2 hours in favorable conditions
- Apply the second coat of WoodForce Clear at 4-6 mil
- Allow to dry in favorable conditions

### Clear Accelerated Natural Weathering:

- Apply the first coat of WoodForce Accel at 6-8 mil
- Allow to dry, generally 2 hours in favorable conditions
- Apply a second coat of WoodForce Clear at 4-6 mil
- Allow to dry in favorable conditions

## VINTAGE COLORS WORKING PROCEDURE

- Apply the first coat of WoodForce Accel at 6-8 mil
- Allow to dry, generally 2 hours in favorable conditions
- Mix color using Sansin colorants as per Color Guide
- Test the colored WoodForce formula to ensure proper results are achieved
- Apply a second coat with WoodForce in the specified formula at an initial 4-6 mil and technique the surface, which may remove some product for effect. To further accelerate weathering effects, you may reduce color strength by adding Clear to the color. Allow to dry in favorable conditions
- Apply the third coat of WoodForce Clear at 4-6 mil
- Allow to dry in favorable conditions

## MAINTENANCE

Exposed vertical surfaces require a maintenance coat of WoodForce Clear every 4-6 years on standard timber. Use Multi-Wash ahead of maintenance applications. Carefully rinse using clean water. Allow to dry and apply the maintenance application. Use WoodForce to enhance aesthetics as desired and follow with an application of WoodForce Clear to enhance protection. Without maintenance, WoodForce will erode slowly to expose natural weathering, darkening will occur as wood moisture content increases and degradation takes place. Reapply WoodForce to enhance protection.

## STORAGE & SAFETY

Shelf life when stored in ideal conditions is 3 years. Store at temperatures of between +10°C and + 30°C (50°F and 86°F). Keep containers tightly closed. Keep from freezing. See Safety Data Sheet.

## CONDITIONS OF SALE

The only obligation of the manufacturer and seller shall be to replace such quantity of Sansin product that is proven to be defective. Proof of purchase is required. Seller or manufacturer shall not be liable for any loss or damage connected with the use and/or handling of this product. All labor costs are specifically excluded. User should determine suitability of product for the intended use before application. User assumes all risk and liability in connection therewith. This warranty is expressly made in lieu of any and all other rights, warranties, conditions and remedies, express or implied, including but not limited to any implied warranty or condition of merchantability, fitness for a particular purpose, and any warranty or condition arising out of a course of dealing, a custom or usage of trade. If any distributor or seller of product offers warranties or remedies which differ from those offered by Sansin, Sansin accepts no responsibilities for such warranties or remedies.

## WARNING TO USERS

Keep out of reach of children. If swallowed immediately drink two glasses of milk or warm water, do not induce vomiting and call physician immediately. Avoid contact with skin or eyes; flush with soap and water. Avoid breathing of vapor or mist. Wear a properly fitted NIOSH/MSHA approved respirator. The information contained in this document is given in good faith based on our current knowledge. The use of the product is beyond the control of The Sansin Corporation and no guarantees, expressed or implied, is made as to the result to be obtained if not used in accordance with the published Directions for Use. The Sansin Corporation does not assume any legal responsibility for use or reliance on same. This information must on no account be used as a substitute for necessary field tests, which alone can ensure that the product is suitable for the expected use. Before using any product, read its label.

© ALL RIGHTS RESERVED  
NOVEMBER 2024

